

**Bannermaterial**  
We recommend  
200-280 g  
polyester

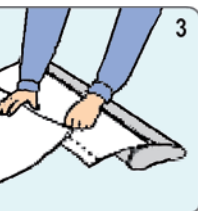
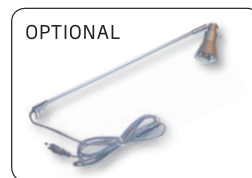
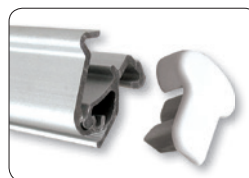
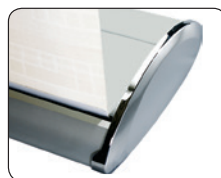
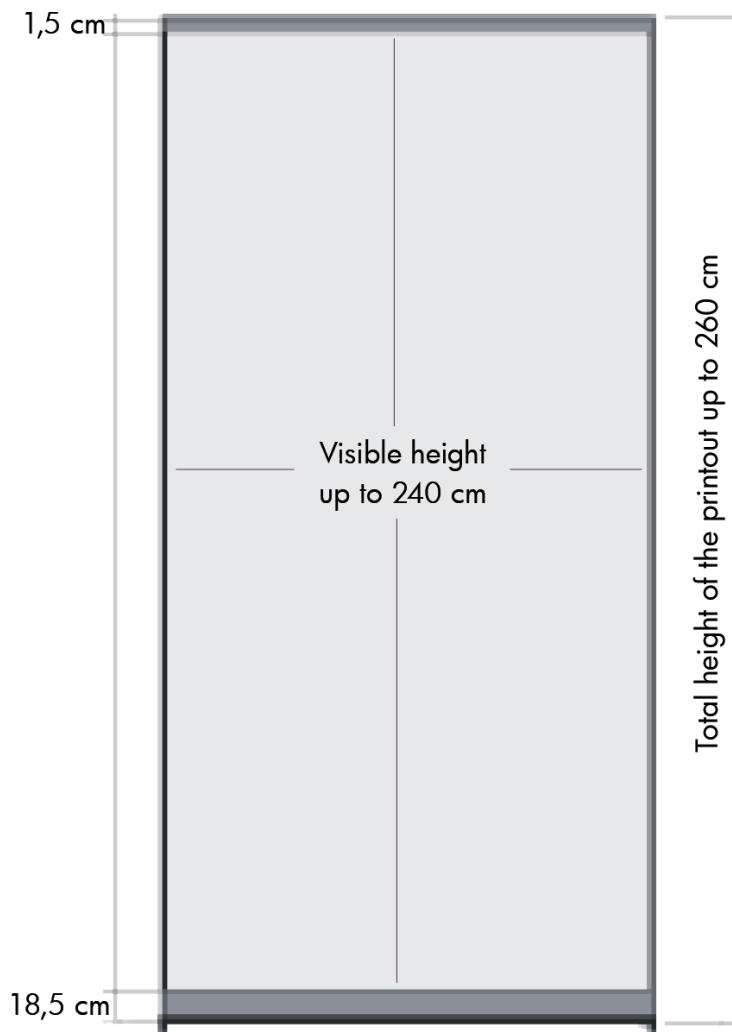


🇬🇧 Roll-up with flexible height. Produced in quality silver anodized aluminum. Solid construction and very nice design. Clamp profile in top and strong tape on the bottom roll makes mounting easy. Black luxury bag is included in the price. New tape must be mounted when changing the banner. Delivered without banner.

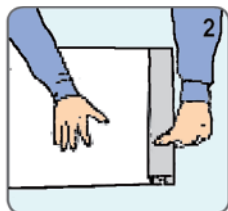
🇩🇪 Einseitiger Roll-up mit variable Höhe - aus einem solidem silber-eloxiertem Aluminium hergestellt. Kräftige Konstruktion im stilgerechten Design. Das Klebeband an der Rolle sowie die Klemmleiste oben, ermöglicht eine leichte Montage des Banners. Kräftige schwarze Luxus Tasche ist im Preis einbegriffen. Beim Wechseln des Banners muss neues Klebeband an der Rolle montiert werden. Wird ohne Banner geliefert.

🇩🇰 Enkelt-sided roll-up med variabel højde - udført i sølv-eloxeret aluminium. Kræftig konstruktion i stilrent design. Topprofil med klemleiste og kraftig tape på bundrulle gør, at det er let at montere banneret. Kraftig sort luksus taske er inkluderet i prisen. Ved udskiftning af budskab, skal ny tape monteres på bundrulle. Leveres uden banner.

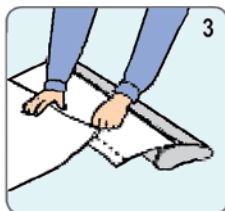
## Graphic dimensions:



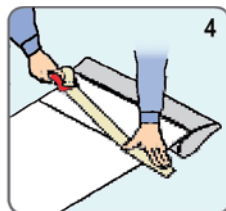
1 Make the front side of the graphic down on the desk, open the graphic clip to a suitable angle, then insert the top of graphic into the gap. Be sure to make tightly and right in order.



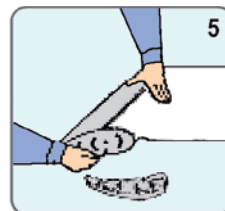
2 Make the flexible clip back until it is flat. Lock the graphic tightly.



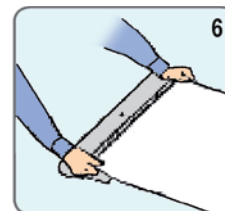
3 Make the front side of the graphic up and the back of roll-up up, put the leading paper in good place, tore down the double-glye film, make the back of graphic glue to it. **Notice:** When gluing, make it right in line with the black parallel.



4 Apply the glue tape to the joint between graphic and leading paper, firm it better.



5 Press the graphic with strength by hand, meantime, press the roll-up body. Pull the graphic out slightly, loose the lock latch and pull it out completely. **Notice:** Avoiding the graphic scrolling instantly.



6 Loose the hand pressing the graphic, but do not leave the graphic. Make it scroll gradually and adjust it while scrolling until the whole graphic smoothly scrolling in.

## Installation instruction

Model	Art.no.	Banner size	Visible Banner	Colour	Total W x H	Package size and weight	Pallet size and quantity
309	4539	56 x 216 - 260 cm	56 x 196 - 240 cm	Alu	63 x 206 - 250 cm	13 x 67 x 25 cm 4,5 kg	80 x 120 x 220 cm 66 pcs.
-	4540	83 x 216 - 260 cm	83 x 196 - 240 cm	-	90 x 206 - 250 cm	13 x 92 x 25 cm 6,0 kg	80 x 120 x 220 cm 50 pcs.
-	4541	96 x 216 - 260 cm	96 x 196 - 240 cm	-	103 x 206 - 250 cm	13 x 108 x 25 cm 7,0 kg	80 x 120 x 220 cm 32 pcs.
-	4542	116 x 216 - 260 cm	116 x 196 - 240 cm	-	123 x 206 - 250 cm	13 x 128 x 25 cm 8,5 kg	80 x 120 x 220 cm 28 pcs.
-	4543	150 x 216 - 260 cm	150 x 196 - 240 cm	-	157 x 206 - 250 cm	13 x 162 x 25 cm 10,0 kg	80 x 120 x 220 cm 24 pcs.
-	4544	200 x 216 - 260 cm	200 x 196 - 240 cm	-	207 x 206 - 250 cm	13 x 212 x 25 cm 13,0 kg	80 x 120 x 220 cm 24 pcs.
	4505	Spotlight 50 W		Alu/silver		8 x 7 x 46 cm 0,4 kg	80 x 120 x 220 cm 400 pcs.